

## New Decatur Place Main Entrance

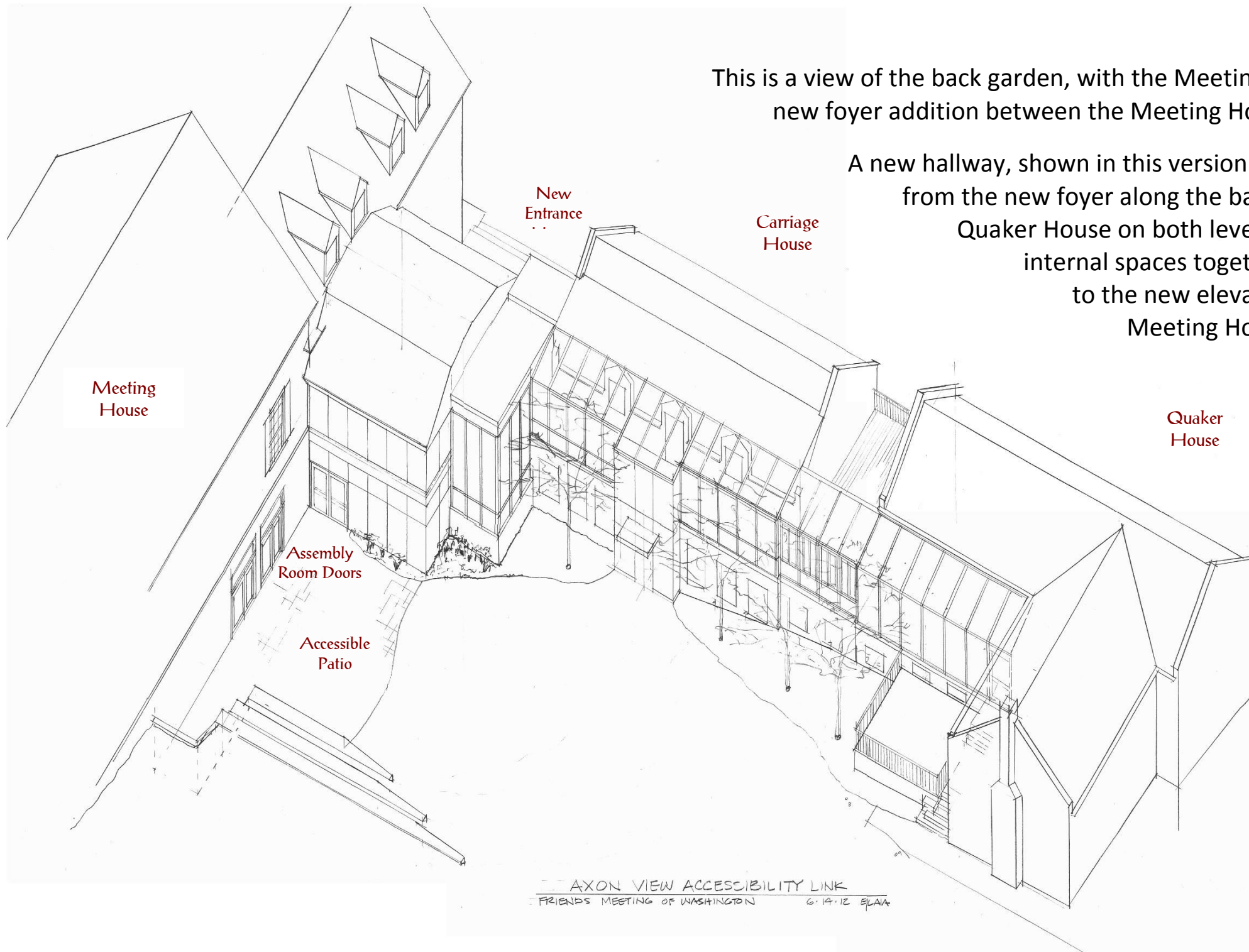


This is one possible version of a new main entrance on Decatur Place, between Carriage House and the Meeting House.

The masonry tower on the left is the elevator, while the porch on the right contains the new entrance, leading to the elevator foyer, with stairs up to the Meeting Level and connections to the Meeting House (right) and Quaker House and Carriage House (left).

This is a view of the back garden, with the Meeting House on the left and the new foyer addition between the Meeting House and Carriage House.

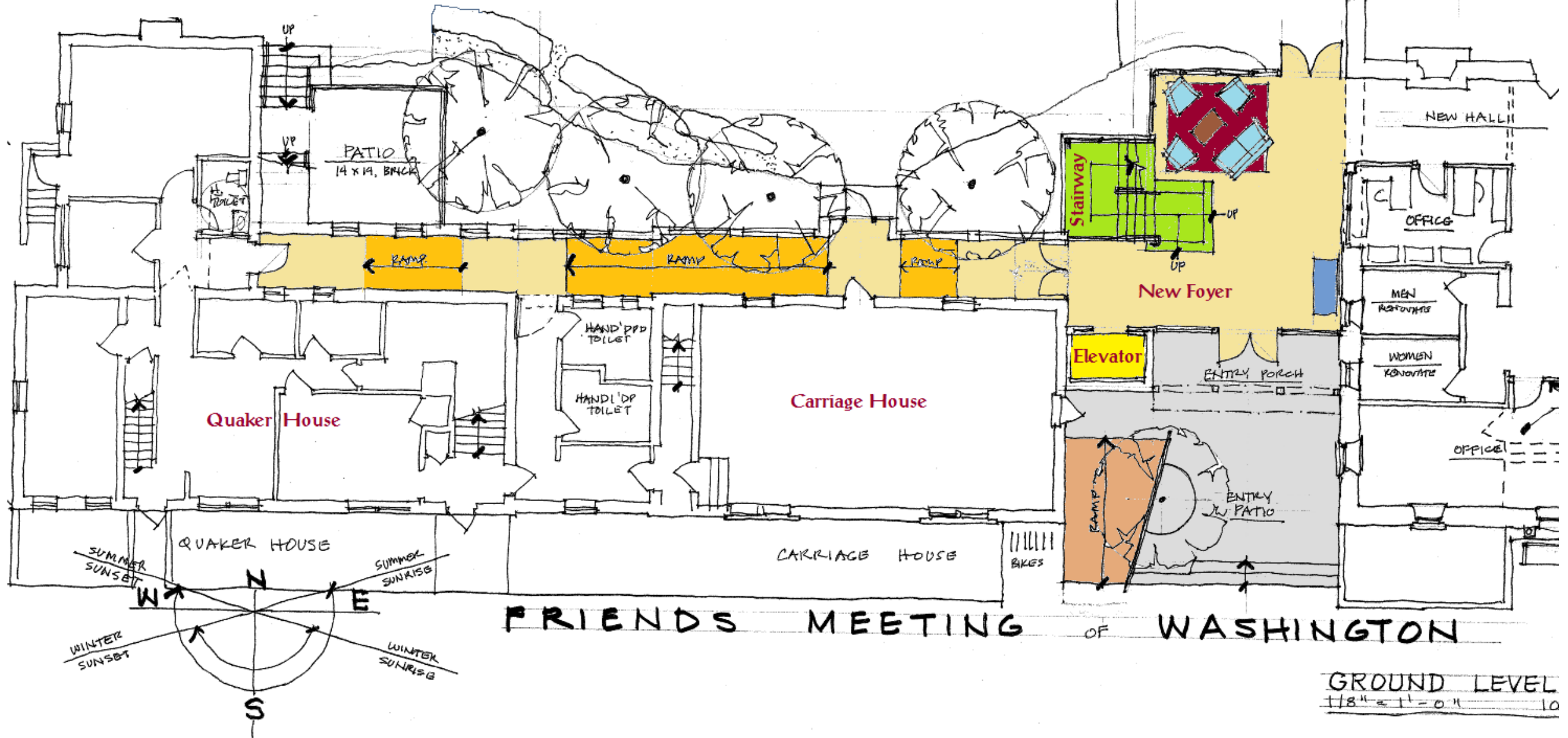
A new hallway, shown in this version with a glass roof, runs from the new foyer along the back of Carriage House and Quaker House on both levels, connecting all their internal spaces together and connecting them to the new elevator and entrance and to the Meeting House.



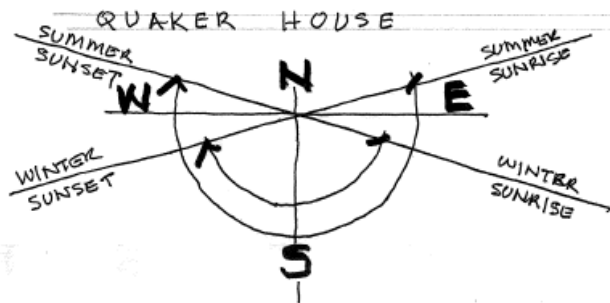
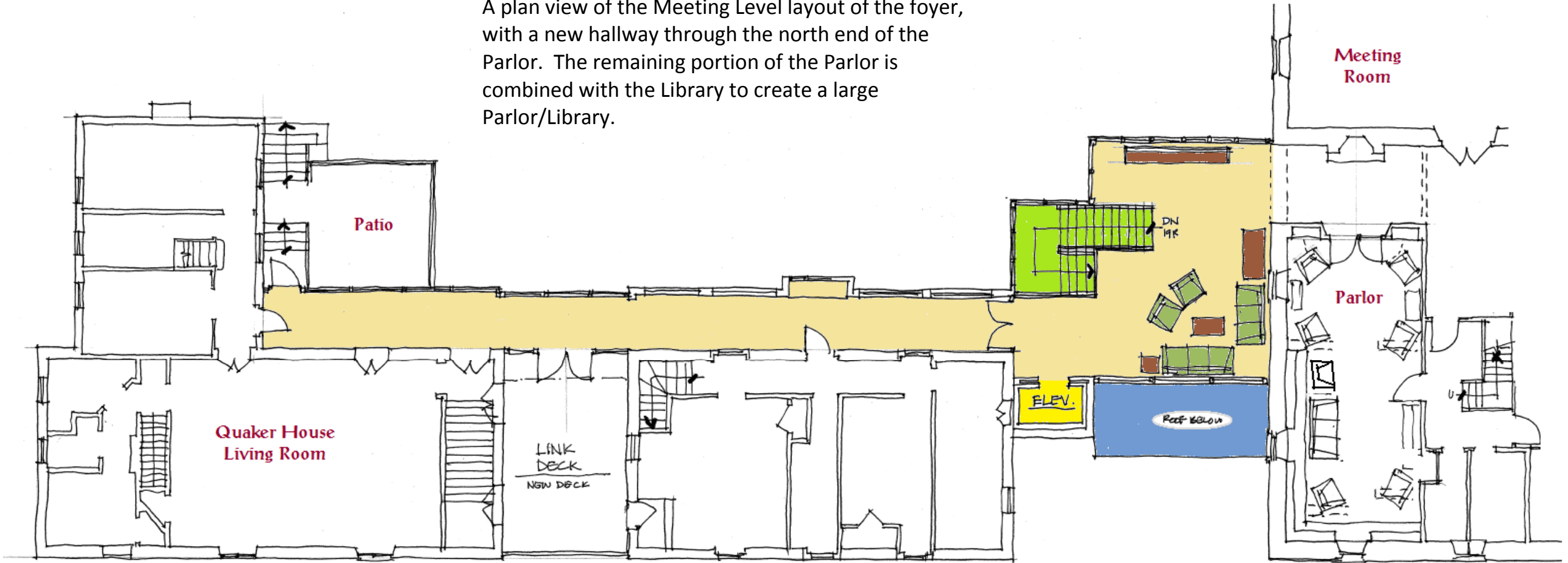
AXON VIEW ACCESSIBILITY LINK  
FRIENDS MEETING OF WASHINGTON 6.14.12 ELAIA

A plan view of the ground level, showing a possible layout for the new entrance foyer, with stairs, elevator, door to the back garden, hallway connection to the Assembly Room, and the new hallway addition connecting across the back of Carriage House to Quaker House.

New, larger Assembly Room doors open directly onto new patio space and lower back garden.



A plan view of the Meeting Level layout of the foyer, with a new hallway through the north end of the Parlor. The remaining portion of the Parlor is combined with the Library to create a large Parlor/Library.



FRIENDS MEETING OF WASHINGTON

MEETING LEVEL  
1/8" = 1' - 0"



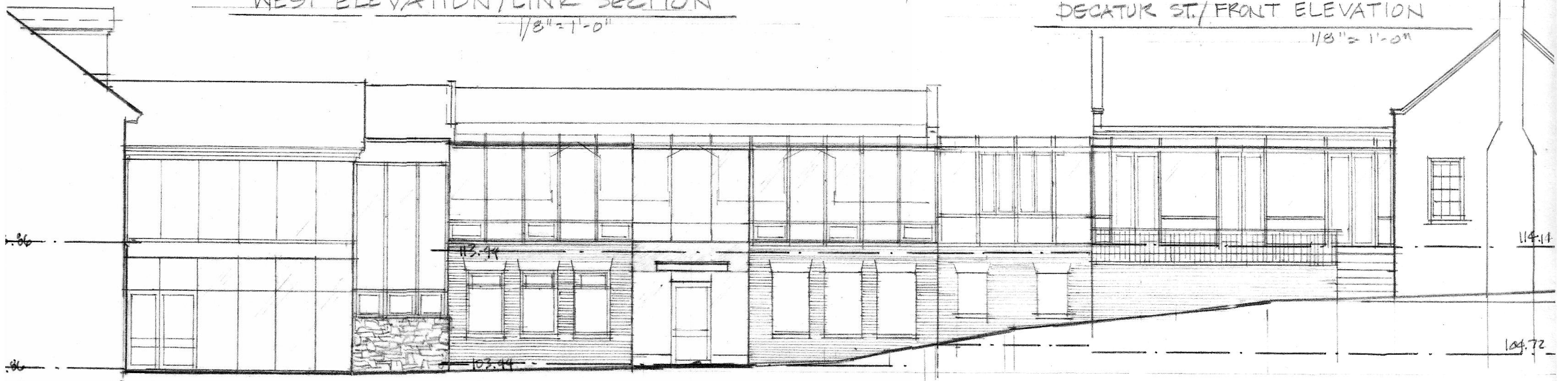


WEST ELEVATION / LINK SECTION

1/8" = 1'-0"

DECATUR ST. / FRONT ELEVATION

1/8" = 1'-0"



GARDEN ELEVATION  
ACCESSIBILITY LINK WITH HALL CONNECTING CARRIAGE HSE + QUARER HSE