

FMW Renovation Update

January 27, 2019

Winter solitude

In a world of one color

The sound of wind.

— Basho

Monday ☀️

Very cold. Very quiet.

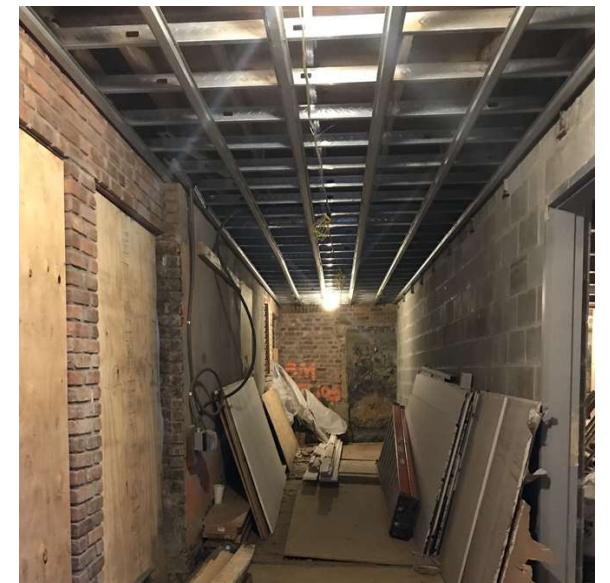
Tuesday 🌤️

Inside the Storeroom, a new development.

Four carpenters add framing and insulation to the walls.



In the adjoining corridor, they add more ceiling framing and an electrician installs temporary lighting.



The ironworkers continue to install Lobby steel.

At the end of the day, there is only one major beam left on the ground and one remaining beam pocket for it to go into.



Spoiler alert: that beam will still be there at the end of the week.

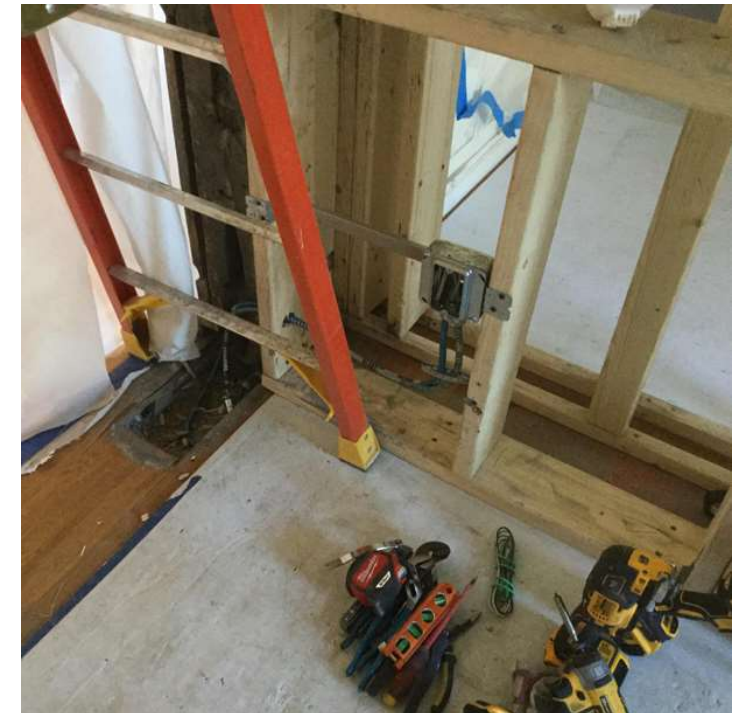
The upper floor is framed in. The ladder on the left goes up where the new stairs will rise.

The Parlor window on the left is about to disappear.

Some paint is added to the sides of the bulkheads.



An electrician continues to revise and reroute wiring to accommodate the changes to come.



Wednesday 🌧️

The ironworkers continue to install Lobby steel.



The roofers tear the slate shingles off the Carriage House roof and install new waterproofing membrane — the first step in adding a new roof over the dormers and integrating it with the old one.

Folding doors in the Assembly Room will allow the occasional recreation of the Children's Library space.

Those doors arrive from Germany and installation begins.



Also in the Assembly Room, electricians start to install nearly 300 feet of LED lighting above the crown molding.



Monarc continues to paint the Assembly Room walls.

They also install new construction parking signs along Phelps Place to prepare for the bioretention pond installation.

The cast stone capstones for the retaining walls are delivered.



Skylights for the new Carriage House room are also delivered.

Masons repair the wall above the future second floor hallway entrance.



A temporary wall is constructed to protect the south half of the former Parlor from what is about to happen in the north half.



Thursday 🌧️

Rain outdoors, but work continues indoors.

The electricians continue to install the Assembly Room lights and control circuitry.

More painting, and the first set of folding doors is set in place.



An arborist comes by to repair a tree protection fence that got knocked over by a truck and then tripped a Friend on her way into the Meeting House.

Friday ☀️

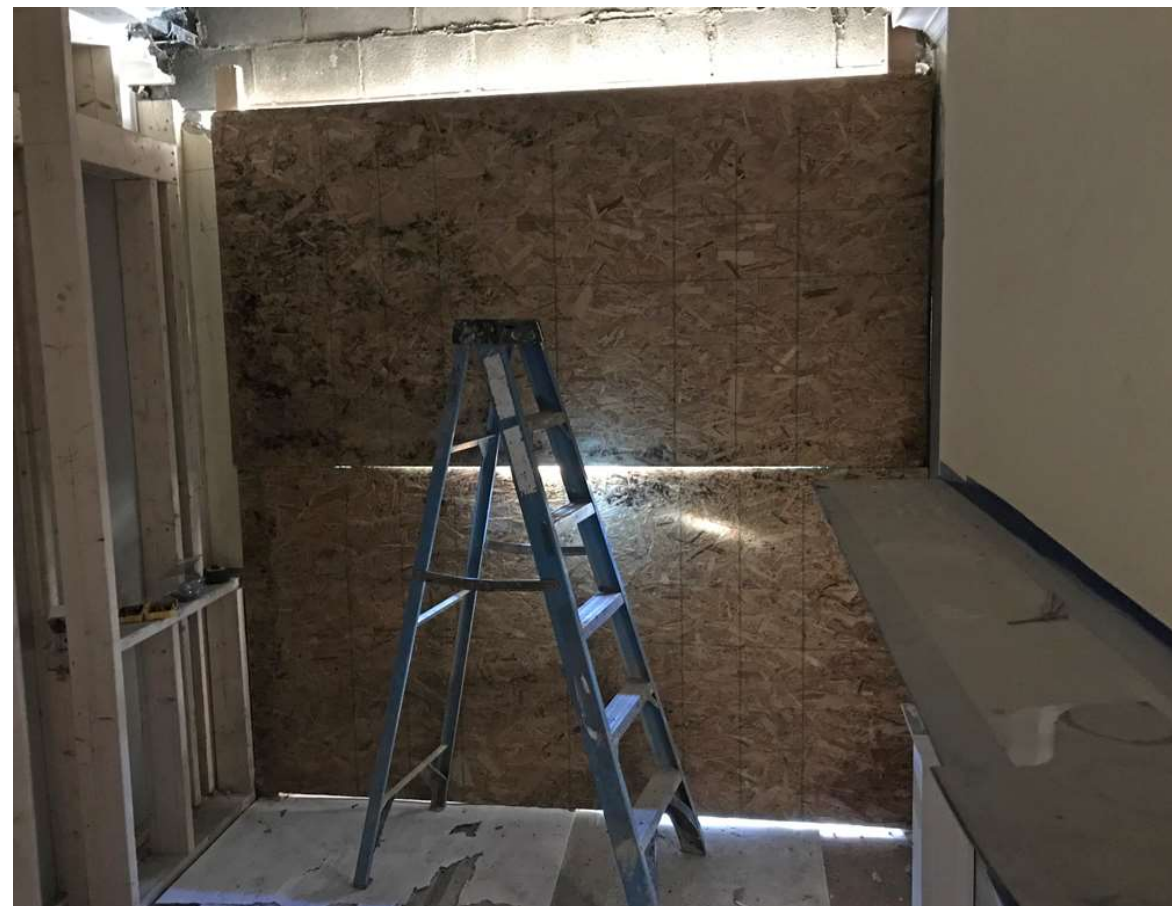
Having finished the insertion of lintels above the hallways and repaired the wall, the masons get destructive again, carving out the Parlor window and surround wall to make a hallway-sized opening in the Meeting House wall.



They also prepare a mock-up display of the stone facing that will cover the elevator tower.



Here's the new inside view of the Parlor/hallway.



Despite the sunny weather, the ironworkers do not appear.

The carpenters do, and they quickly add a roof truss to the Carriage House roof.



Inside the Assembly Room the electricians continue to work on the lighting.

You can't see it from below, but the troughs behind the molding are full of LED fixtures.



The folding wall installers place the second set of folding doors, enclosing the former Children's Library space.



Monarc hopefully completes a rough ramp at the Phelps Place wall, hoping to entice excavators into the garden to work on the bioretention pond.



Saturday

Monarc takes advantage of good weather to schedule a Saturday work day.

The carpenters complete the Carriage House corridor roof truss and sheath it with plywood.



Looking Ahead

On Monday the bioretention pond work is scheduled to begin.

The ironworkers have promised to show up and complete the Lobby steel.

The masons will cut another hallway-sized hole in the Meetinghouse at office level for the lower hallway.

The completion of the lighting and the installation of the ceiling should greatly improve the appearance of the Assembly Room.

The cast stone garden stairs will be delivered and installed.

Slate shingles will be added to the roofing and some degree of weather protection will be provided for the work.

The front steps and wheelchair ramp will be poured.

Fire alarm and sprinkler work will begin sometime soon.